

P.O. Box 2607
Nantucket, MA 02584
Tele. 508-228-3942
Fax 508-228-8778

RAFAEL E. OSONA

AUCTIONEER & APPRAISER

Email: info@RafaelOsonaAuctions.com
www.RafaelOsonaAuctions.com

ANTIQUE & FINE ART AUCTIONS & ESTATE SALES 1980

AUGUST 5th 2017 ADDENDUM

Notations and Corrections:

#72 Davis Hall

#203 York Street Looking East

#197 Whaleman Made Scrimshaw Chambered Nautilus Watch Hutch



38 a. JAMES EASTON 2ND'S ROUND OPEN SWING HANDLE NANTUCKET LIGHTSHIP BASKET, circa 1865-1875, carved and shaped handle riveted to a three-quarter length wood ear and stave, double rim wrap, cane woven, wood bottom plate. Branded in four places with the owner's name "J. Easton 2d." Height 5 ½ in. Diameter 8 ¼ in.

Note: James Easton 2nd (1807-1903) was a noted Nantucket jeweler and silversmith who operated a business selling watches, jewelry, spectacles, silverware and other various small personal items. He purchased the business from William Hadwen in 1828 and operated through the 1850s, working as sole proprietor and from 1830-1837 in partnership with Frederick Sanford before leaving the trade to become an investor in whaling ventures.

105 a. CHINESE EXPORT OIL ON CANVAS
"STARBOARD PORTRAIT OF THE AMERICAN SHIP MIDNIGHT SAILING INTO HONG KONG," attributed to Hin Qua (Chinese, circa 1850) in period Chinese Export Chippendale frame with gilt slip and original Hong Kong frame and canvas, Merchant's label on reverse.
21 in. x 31 in.

Exhibited: Nantucket Historical Association's "From Brant Point to the Boca Tigris," July 9 1994 – October 15 1994.



105 b. ITALIAN SCHOOL
GOUACHE ON PAPER "A VIEW
OF NAPLES," 19th century, in
 ebonized frame with gilt lined slip.
 14 ½ in. x 23 in.



105 c. PAIR OF ROMANESQUE CARVED CEMENT BUSTS,
 depicting man and woman with foliate and flowered crowns.
 Heights 25 in. & 26 ½ in.

147 a. ANTIQUE MODEL OF THE FULLY
RIGGED FRENCH SCHOONER "NORMANDIE",
 a solid mahogany hull on a rectangular molded stand
 with bone pad feet and hundreds of carved bone
 appointments—rudder, anchors, cabins, watches, cleats,
 ship's bell, portholes, davits, ship's wheel, buckets,
 railings, hull trim, ladders, hinged gangways, pullies,
 yardarm fittings, capstan, dog houses & keel trim.
 Schooner Height 33 in. Length 37 in. Width 10 in.





172 a. NEST OF SEVEN ROWLAND FOLGER (1803-1883) NANTUCKET BASKETS, mid-19th century, of round form and dark patina with double wrapped rim, the arched swing handles fastened to a cut metal ear, all stenciled "*R. Folger Maker Nantucket, Mass.*"

Smallest Height 4 in. Diameter 6 in. Largest Height 8 ½ in. Diameter 12 ½ in.

Provenance: Sold Rafael Osona Auctions, August 3rd 2002, lot 176; Sara Jo Kobacker Collection, Nantucket, MA



172 b. NEST OF THREE ROWLAND FOLGER (1803-1883) NANTUCKET BASKETS, of round form with double rim wrap and shaped swing handles riveted to a brass ear extending half-way to the base, each stenciled on the interior "*R. Folger Maker Nantucket, Mass.*" Heights 4 ½ in., 5 ¼ in. & 6 ¼ in. Diameters 6 ¾ in, 7 ¼ in & 8 ¾ in.



172 c. ROBERT STARK JR. (1933-2014) OIL ON CANVAS "A SINGLE RED SAIL," signed lower left R. Stark. 48 in. x 67 in.
Note: This painting was commissioned in 1988 and is thought to be one of Stark's largest works of art.



202 a. PAIR OF RALPH AND MARTHA CAHOON (AMERICAN 1910-1982 & 1905-1999) SAILOR'S VALENTINES, oil on Masonite and seashell collage by Bernard A. Woodman (American 1920-1986). The Ralph Cahoon valentine with roundel depicting hot air balloon with sailor and two mermaids atop an affixed faux ivory carved whale with mermaid and sailor in a basket below, signed R. Cahoon. The Martha Cahoon valentine with roundel depicting a merman and mermaid in a clam shell boat, signed Martha Cahoon and dated '84. 20 in. x 20 in. Each



206 a. PARCEL GILT CARVED AND PAINTED MIRROR, Italian, 19th century. 67 in. x 46 in.



227 a. 19th CENTURY FIGURED MAHOGANY BACKGAMMON GAME BOX, on stand with playing pieces. Height 27 ¼ in. Width 29 in. Depth 22 ½ in.

227 b. FINE HAND WOVEN SERAPI CARPET, circa 1880s
9ft. 9 in x 12 ft. 5 in.

Provenance: Shaia Oriental Rugs, Williamsburg, VA to present owner





275 a. JOHN LESLIE BRECK (AMERICAN 1860-1899) OIL ON CANVAS "STAND OF BIRCH TREES IN WINTER, 1895," signed in full and dated '95 lower right, in a 3 inch molded giltwood frame. 26 in. x 32 in.

309 a. WHALE IVORY, WHALEBONE AND SILVER SWIFT, mid-19th century, the very large turned ivory cup finial, table clamp and cage studded with silver and initials E.T.B, whalebone shaft and 13 ½ inch ribs supported by a fine left clenched fist clamp; accompanied by a fitted box of dovetailed construction with turned and wax filled scribed line feet, side and top knobs, four wood inlaid hearts, twelve diamonds, four ¼-inch rounds and a five-point star. Swift Height 21 ½ in. Box Height 6 in. Length 22 ½ in. Width 4 ½ in.

Provenance: Sold Rafael Osona Auctions as part of the William Coffin Collection, 2004.





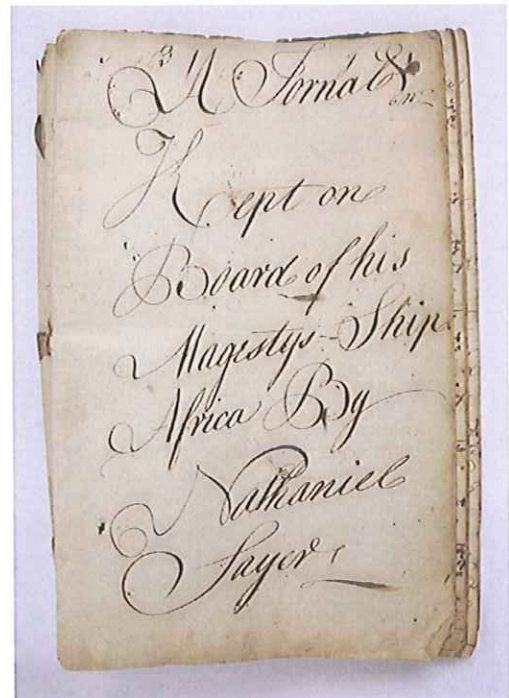
309 b. **WHALEMAN MADE NAIVE MARQUETRY BOX**, dated 1868, fashioned of whalebone, whale ivory, red wax, baleen, mother-of-pearl and various tropical woods, well over 500 pieces.
Height 9 in. Length 14 ¾ in. Width 10 ¾ in.



315 a. **HAND WOVEN WOOL HERIZ CARPET**, circa 1930, 8 ft. 9 in. x 12 ft. 3 in.

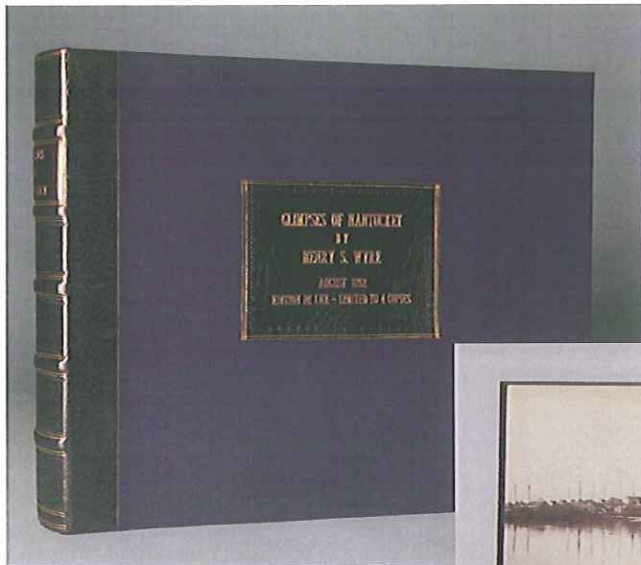


315 b. **HARRIET LORD OIL ON CANVAS (AMERICAN 1879-1958) "VIEW FROM THE CREEKS,"** circa 1940s, unsigned. 20 in. x 17 ½ in.

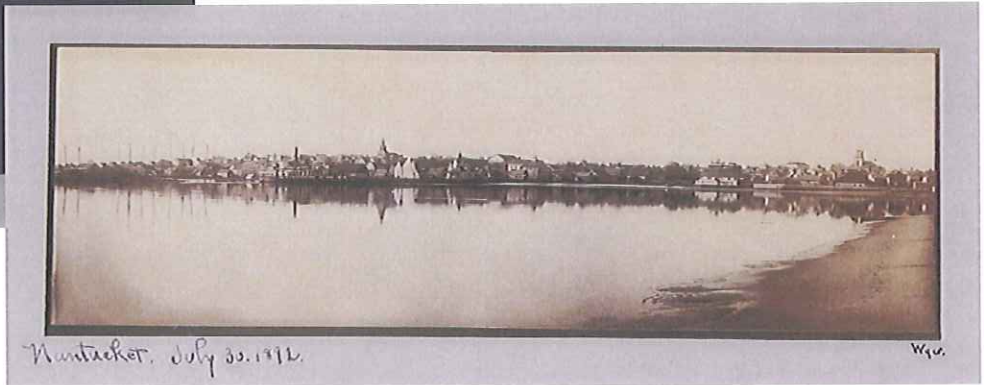


316 a. **A JOURNAL KEPT ON BOARD OF HIS MAJESTY'S SHIP AFRICA BY NATHANIEL SAYER**, the honorable John Seneson Gowen Commander from Spithead to the West Indies, Sept. 15, 1764 to June 12, 1765

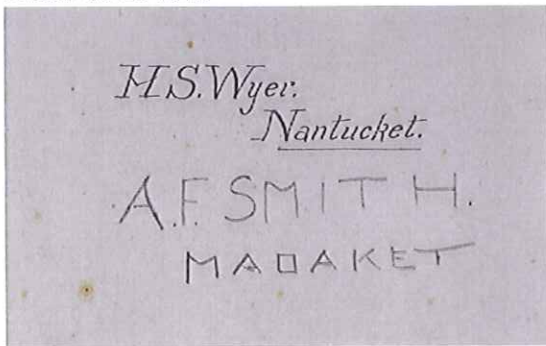
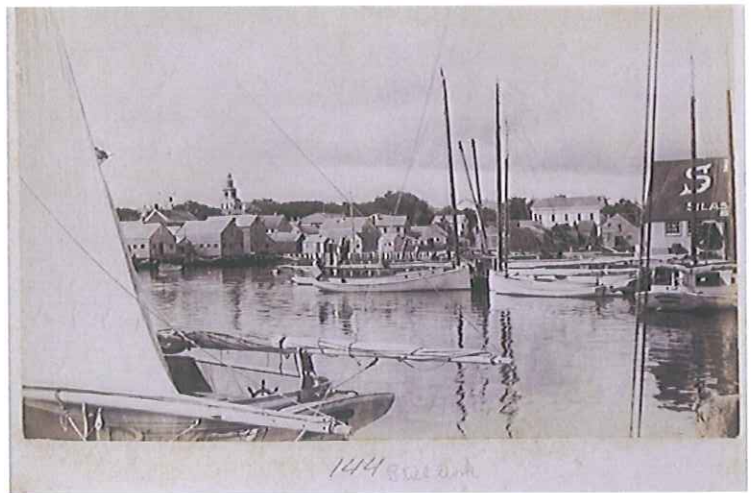
316 b. **A JOURNAL OF THE PROCEEDING OF HIS MAJESTY'S SHIP AEOLUS**, the honorable Captain Gowen commander from January the 11th 1766 and ending February 13th 1767, kept by Nath. Sayer, midshipman. 12 ½ in. x 8 in. (Not Illustrated)



316 c. "GLIMPSES OF NANTUCKET BY HENRY S. WYER, AUGUST, 1892, EDITION DE LUX- LIMITED TO 4 COPIES," PHOTO ALBUM, with a total of 46 photographs of various sizes mounted to 27 boards, some boards mounted with multiple photographs, each with handwritten script titles, poetry and descriptions of Nantucket, each photograph initialed in pencil below the image "H.S.W." Album Overall 8 ¾ in. x 10 ½ in.



316 d. NANTUCKET PHOTO ALBUM BY H.S. WYER (AMERICAN 1847-1920), circa 1895, a total of 28 photographs mounted to 14 boards marked with sticker reading "Howard Album Interchangeable Cards," and bound with shoelace, depicting scenes of Nantucket during the late 19th century. Photographs 4 ½ in. x 7 ½ in. Album Overall 7 in. x 9 ¾ in.



326 a. QUIMPER FAIENCE FOOTED CASSAROLE, circa 1880, with underglaze mark "HB-5-Quimper" Height 5 in. Length 14 ½ in. Width 8 ½ in.

Provenance: From a Nantucket Waterfront Estate Designed by Bunny Williams





326 b. GROUP OF TEN QUIMPER TABLE ARTICLES, circa 1880-1920, comprising five plates, three vases and two figurines.

Provenance: From a Waterfront Nantucket Estate Designed by Bunny Williams

331 a. HARRY MORGAN (NAVAJO 1946-2007) HAND HAMMERED STERLING SILVER AND TURQUOISE CONCHO BELT, with six oval conchos inlaid with #8 Nevada turquoise cabochons, 7 hammered butterflies and buckle inlaid with two cabochons, stamped sterling and signed Henry Morgan.



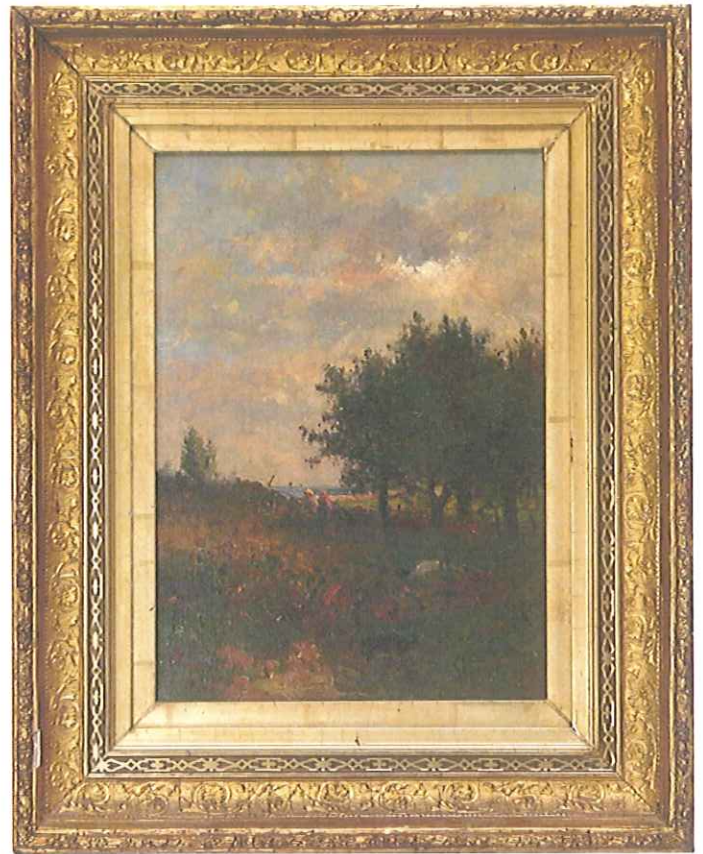
331 b. LARGE AND IMPRESSIVE NAVAJO STERLING SILVER AND TURQUOISE SQUASH BLOSSOM NECKLACE, stamped "N.B.," Nelson or Nelvin Burbank.



331 c. PAIR OF SCARCE ART DECO BRONZE NORTHWEST COAST TOTEM POLE ANDIRONS, Height 11 ¾ in.



331 d. FOUR-PIECE DEVILISH BRASS AND STEEL FIREPLACE TOOL SET, with gargoyle head handles, comprising: shovel, tongs, broom and poker.



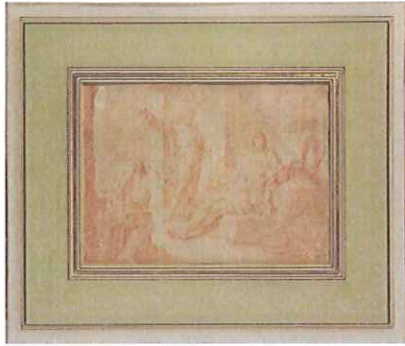
331 e. GEORGE FRANK HIGGINS (AMERICAN B. 1850) OIL ON CANVAS, "POLPIS HARBOR," initialed and dated lower right G.F.H. '75. 13 ½ in. x 9 ½ in.



331 f. PAIR OF PASTEL PORTRAITS, 19th century, Sophie Mosheim born on Purim, the 14th month of Adar in 1795 and Gempel Mosheim born on the 15th of Schebat in 1789. The pair of portraits set in their original water-gilt lemon gold frames, original maker's label on reverse. 18 ½ in. x 16 in., Overall 20 ¾ in. x 17 ¾ in.

Provenance: The Paul and Glenda Weld Collection; Private Collector

331 g. WATERCOLOR ON PAPER ATTRIBUTED TO GUIDO RENI (ITALIAN 1575-1642) "BIBLICAL SCENE" 4 1/8 in. x 5 3/4 in.



338 a. GROUP OF EIGHT ENGLISH PRATT WARE POTTERY JUGS, circa 1783-1795, decorated with various motifs. *Provenance:* Earl D. Vandekar; From a Nantucket Waterfront Estate Designed by Bunny Williams



338 b. GROUP OF FIVE ENGLISH PRATT WARE POTTERY JUGS, circa 1790-1810, decorated with various motifs. *Provenance:* Earl D. Vandekar; From a Nantucket Waterfront Estate Designed by Bunny Williams



338 c. GROUP OF TEN LEEDSWARE TABLE ARTICLES, 19th century, of various manufacture and design, comprising: sauce tureen with cover and ladle, pair of petite covered urns, circular basket, oblong basket with handles, oval chestnut basket on stand and two near pairs of reticulated dishes.

Provenance: From a Nantucket Waterfront Estate Designed by Bunny Williams

338 d. AFTER FÉLIX FRANÇOIS GEORGES PHILIBERT ZIEM (FRENCH 1821-1911) OIL ON MAHOGANY PANEL "L'ENTREE DU GRAND CANAL, VENICE," signed lower left Ziem, in elaborate carved, giltwood frame. 17 in. x 24 in.



349 a. HAND WOVEN WOOL HERIZ CARPET, circa 1930, 9 ft. 10 in. x 11 ft. 9 in.